



# MULLAN — BUILD —

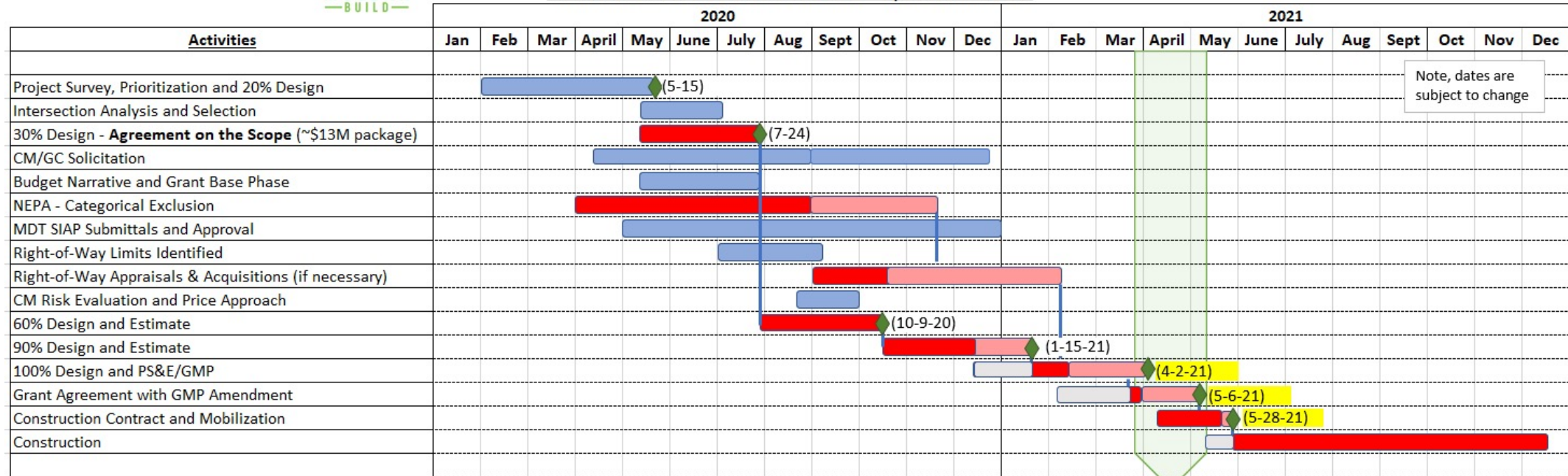
## MULLAN BUILD PROJECT

### BREAKOUT SESSION A DESIGN FEATURES

# OVERVIEW OF DESIGN STAGES



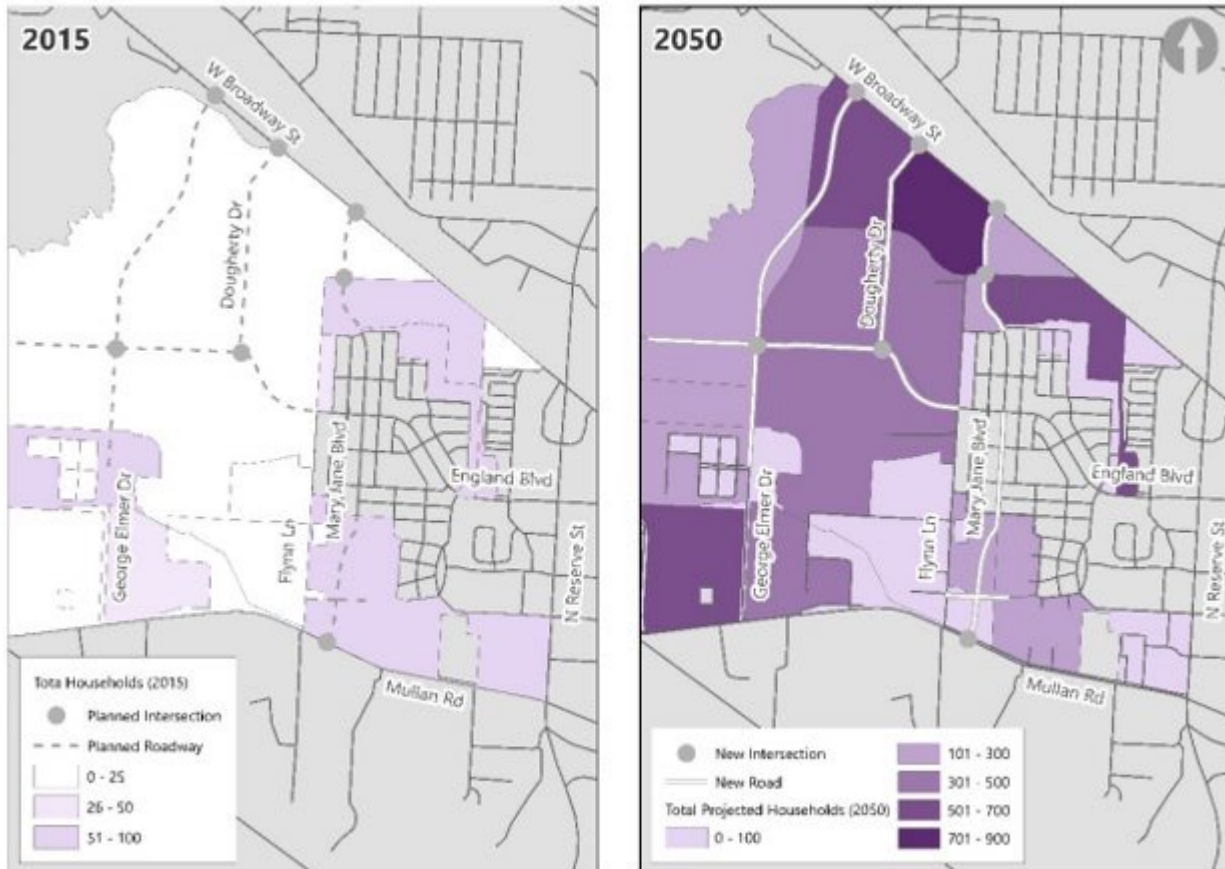
Mullan BUILD Milestone Schedule - updated 3.18.21



Master Plan / 20% Design -> 30% Design -> 60% Design -> 90% Design -> 100 % Design -> Construction

# PROJECTED GROWTH AND TRAFFIC ANALYSIS WORK

Figure 2 Projected Population Growth (2015 - 2050) at TAZ Level

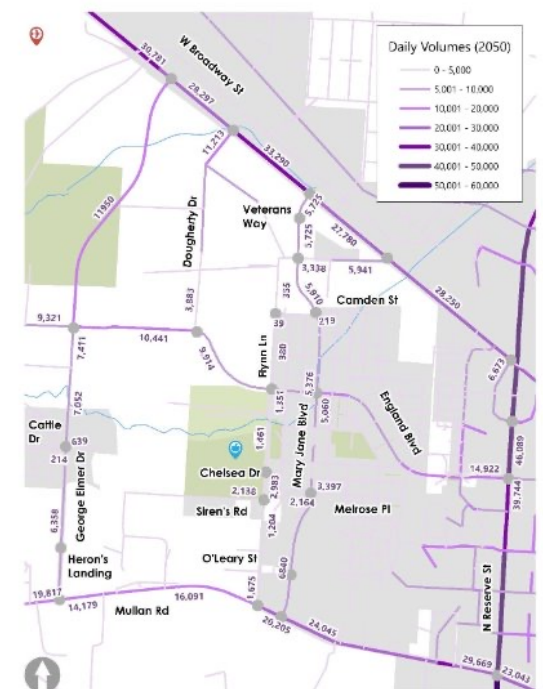


- Regional Model – Future Growth
- Project Traffic Volumes
- Individual Intersection Evaluation

Figure 10 Intersection Control & Roadway Cross-Section Recommendations (2050)

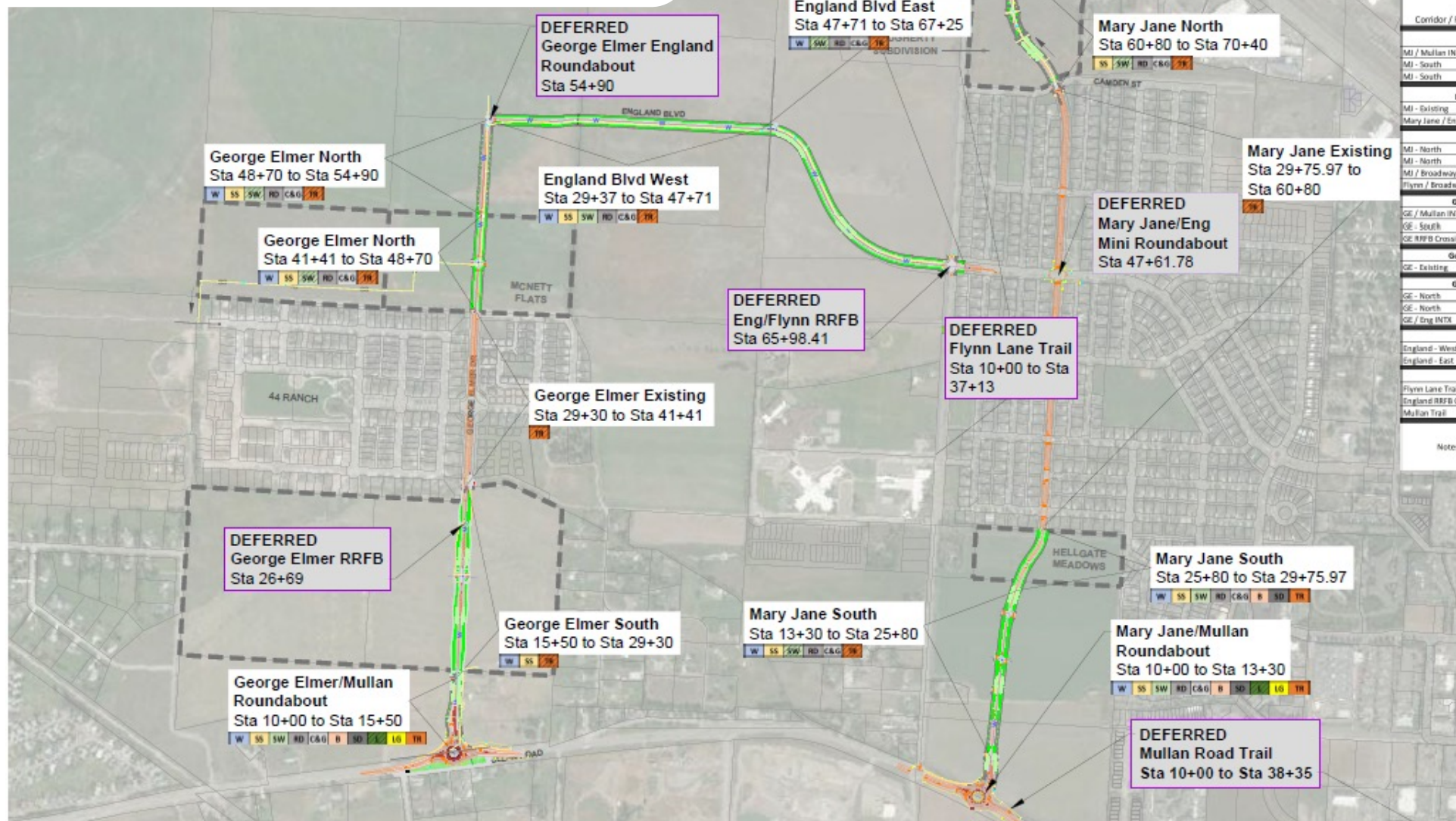


Figure 5 Daily Traffic Volumes (2050)





# FULL PROJECT SCOPE OVERVIEW



CONTRACT SCOPE SUMMARY TABLE

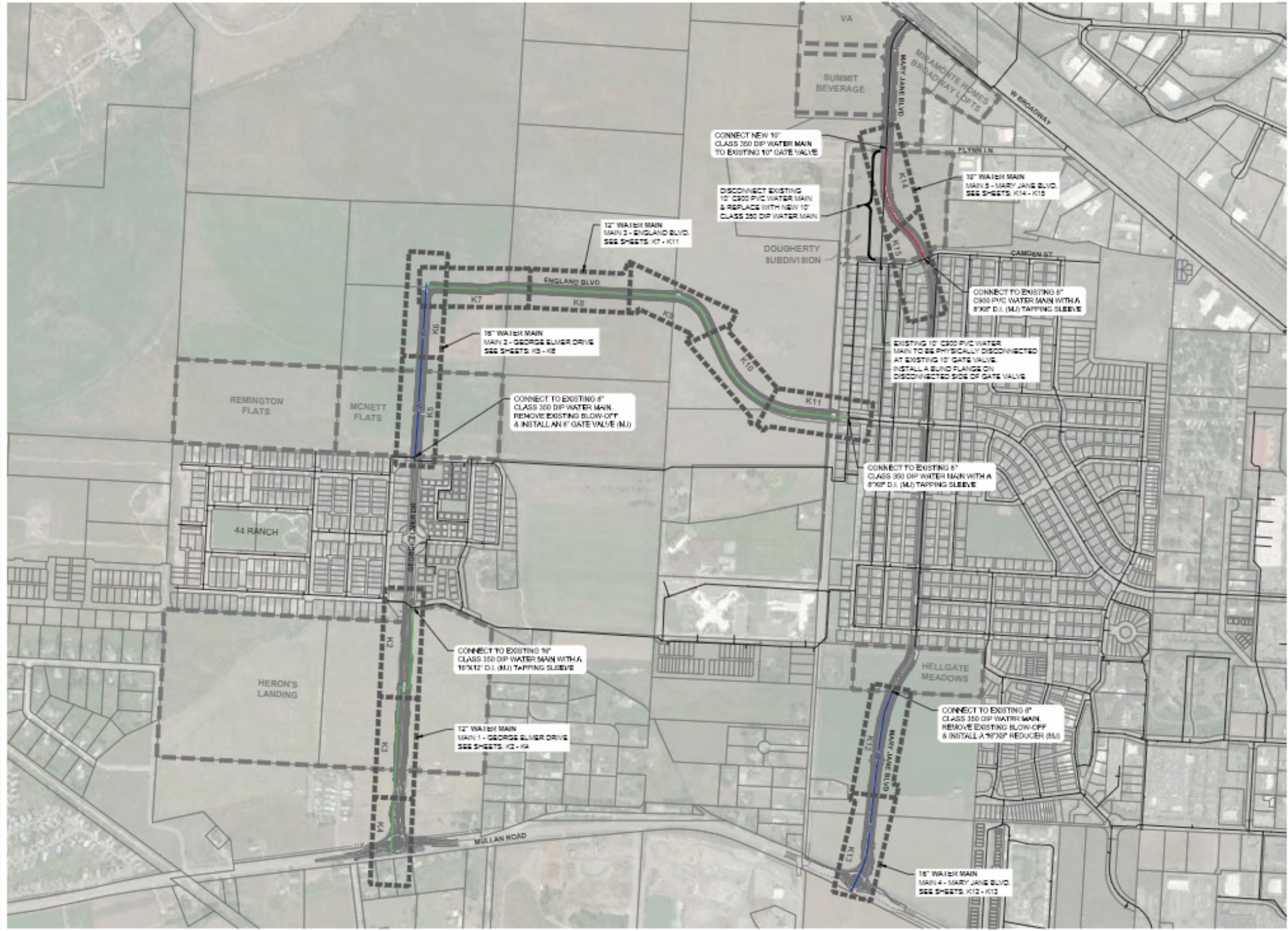
Corridor / Feature	Station	Water Utility	W	SS	SW	MD	C&G	B	SD	L	LG	TR	Strip & Signing
		Sewer Utility	Stormwater Utility	Roadway	Curb and Gutter	Bike Facilities	Sidewalk	Landscaping	Lighting				
Mary Jane South													
MI / Mullan INTX	10+00 to 13+30												
MI - South	13+30 to 25+80												
MI - South	25+80 to 29+75.97												
Mary Jane - Existing													
MI - Existing	29+75.97 to 60+80												
Mary Jane / Eng INTX	47+61.78												
Mary Jane - North													
MI - North	60+80 to 70+40												
MI - North	70+40 to 81+35												
MI / Broadway INTX	N/A												
Flynn / Broadway INTX	N/A												
George Elmer - South													
GE / Mullan INTX	10+00 to 15+50												
GE - South	15+50 to 29+30												
GE RRFB Crossing	26+69												
George Elmer - Existing													
GE - Existing	29+30 to 41+41												
George Elmer - North													
GE - North	41+41 to 48+70												
GE - North	48+70 to 54+90												
GE / Eng INTX	54+00												
England Blvd													
England - West	29+37 to 47+71												
England - East	47+71 to 67+25												
Trails													
Flynn Lane Trail	10+00 to 37+13												
England RRFB Crossing	Eng 65+38.41												
Mullan Trail	10+00 to 38+35												
Notes:	Scope to be completed by MDT lead project Partial facilities scope installed Scope to be completed with BUILD Project Scope to be deferred and constructed with other funding												

LEGEND

WATER UTILITY	W
SEWER UTILITY	SS
STORMWATER	SW
ROADWAY	RD
CURB AND GUTTER	C&G
BIKE FACILITIES	B
SIDEWALK	SD
LANDSCAPING	L
LIGHTING	LG
STRIPE & SIGNING	TR
FULLY DEFERRED	DR

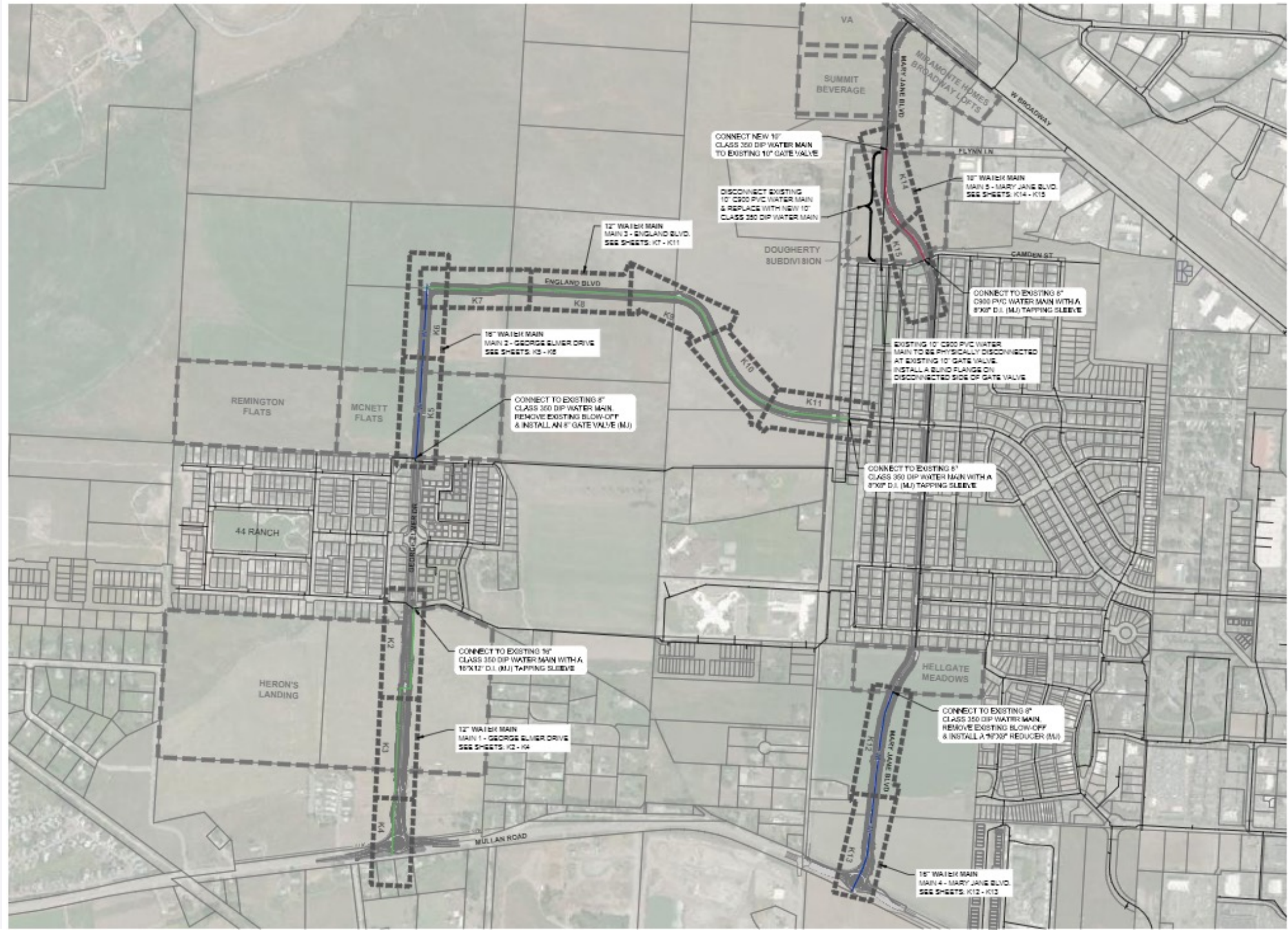


# WATER SYSTEMS OVERVIEW

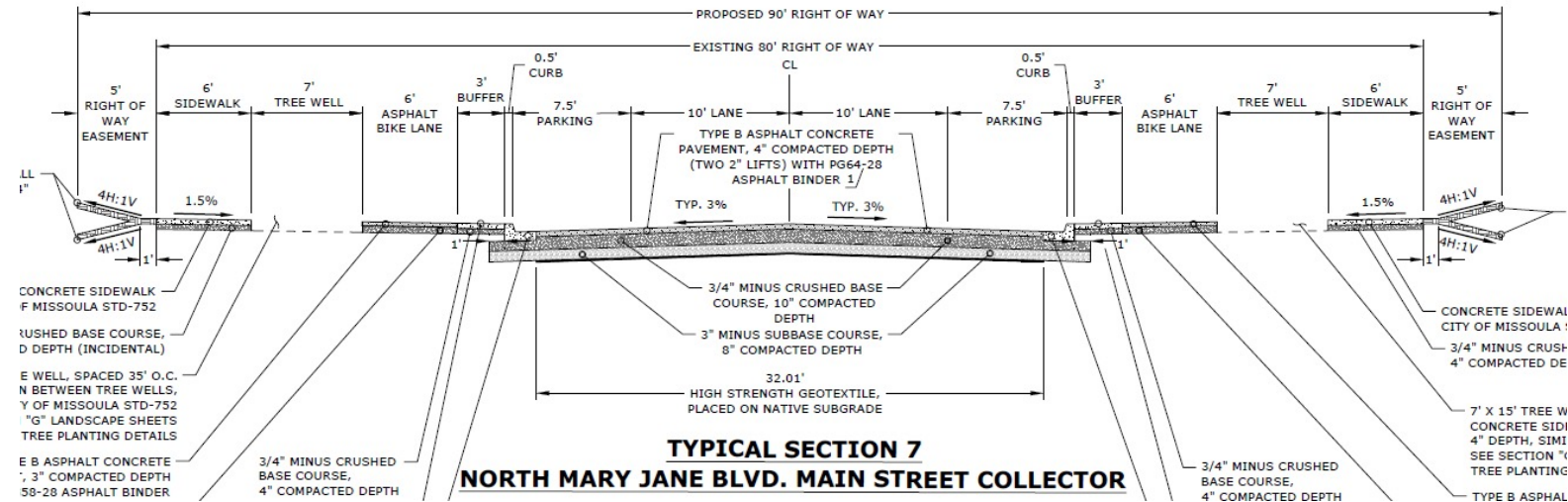
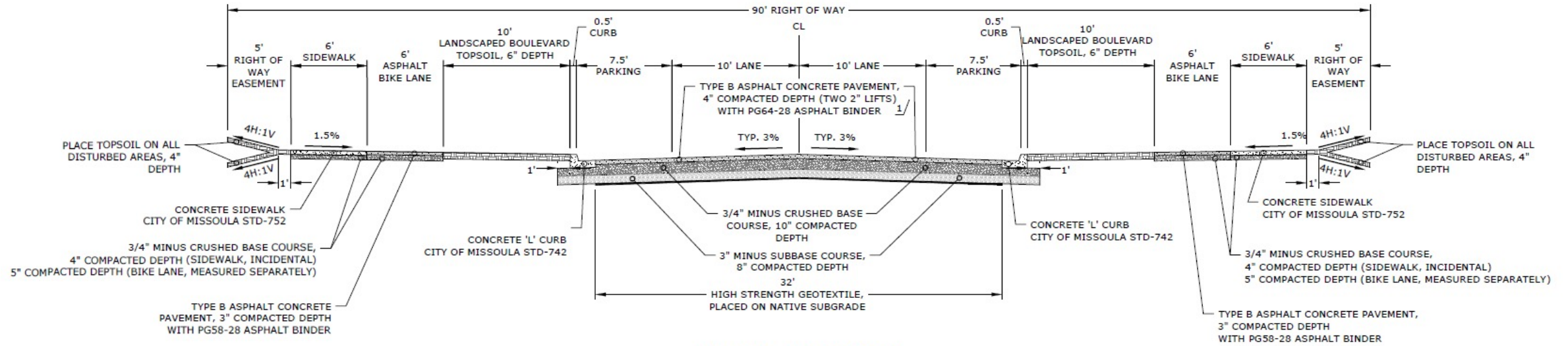




# SEWER SYSTEM OVERVIEW



# MARY JANE - TYPICAL SECTIONS





5' RIGHT OF WAY EASEMENT

6' SIDEWALK

10' LANDSCAPED BOULEVARD TOPSOIL, 6" DEPTH

0.5' CURB

7.5' PARKING

VARIES 10'-16' LANE

CL

VARIES 10'-16' LANE

7.5' PARKING

0.5' CURB

10' LANDSCAPED BOULEVARD TOPSOIL, 6" DEPTH

6' SIDEWALK

5' RIGHT OF WAY EASEMENT

4H:1V

1.5%

6' ASPHALT BIKE LANE

TYPE B ASPHALT CONCRETE PAVEMENT, 4" COMPACTED DEPTH (TWO 2" LIFTS) WITH PG64-28 ASPHALT BINDER

TYP. 3%

TYP. 3%

3/4" MINUS CRUSHED BASE COURSE, 10" COMPACTED DEPTH

3" MINUS SUBBASE COURSE, 8" COMPACTED DEPTH

32'

HIGH STRENGTH GEOTEXTILE, PLACED ON NATIVE SUBGRADE

CONCRETE SIDEWALK CITY OF MISSOULA STD-752

CONCRETE 'L' CURB CITY OF MISSOULA STD-742

CONCRETE 'L' CURB CITY OF MISSOULA STD-742

CONCRETE SIDEWALK CITY OF MISSOULA STD-752

3/4" MINUS CRUSHED BASE COURSE, 10" COMPACTED DEPTH (SIDEWALK, INCIDENTAL BIKE LANE, MEASURED SEPARATELY)

3/4" MINUS CRUSHED BASE COURSE, 10" COMPACTED DEPTH (SIDEWALK, 5" COMPACTED DEPTH (BIKE LANE, MEASURED SEPARATELY)

ASPHALT CONCRETE PAVEMENT, 3" COMPACTED DEPTH WITH PG58-28 ASPHALT BINDER

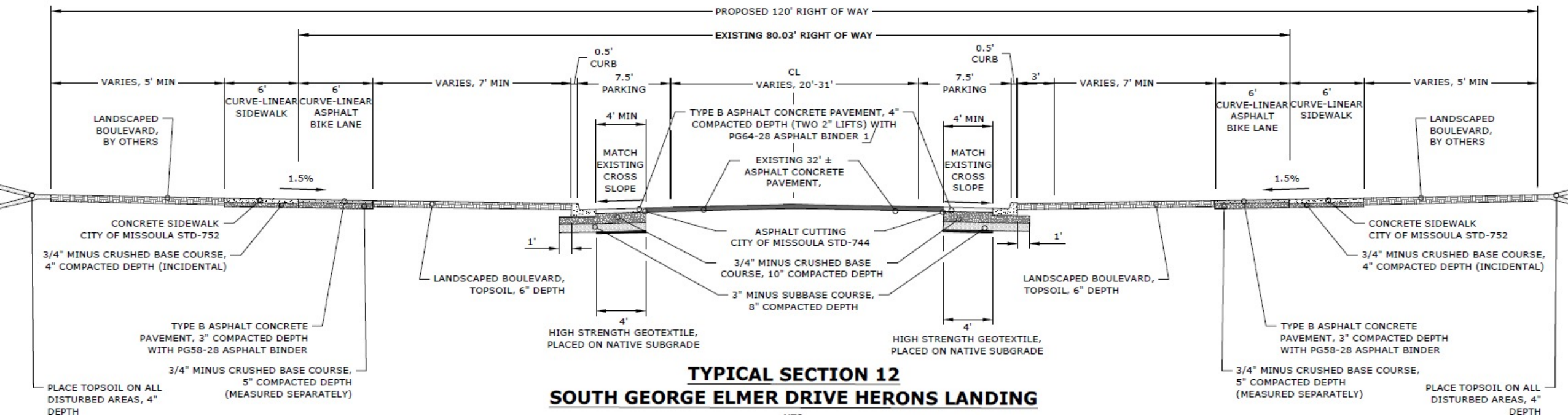
TYPE B ASPHALT CONCRETE PAVEMENT, 3" COMPACTED DEPTH WITH PG58-28 ASPHALT BINDER

**TYPICAL SECTION 18**

**ENGLAND BLVD. NEIGHBORHOOD COLLECTOR**

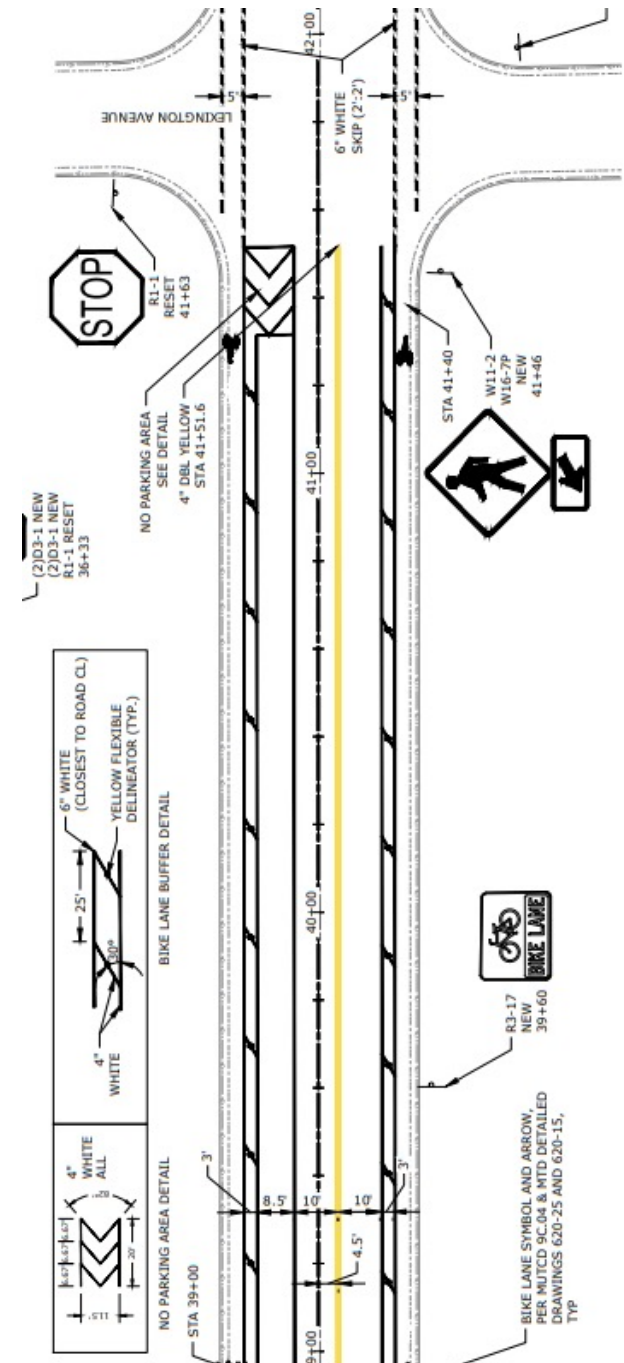
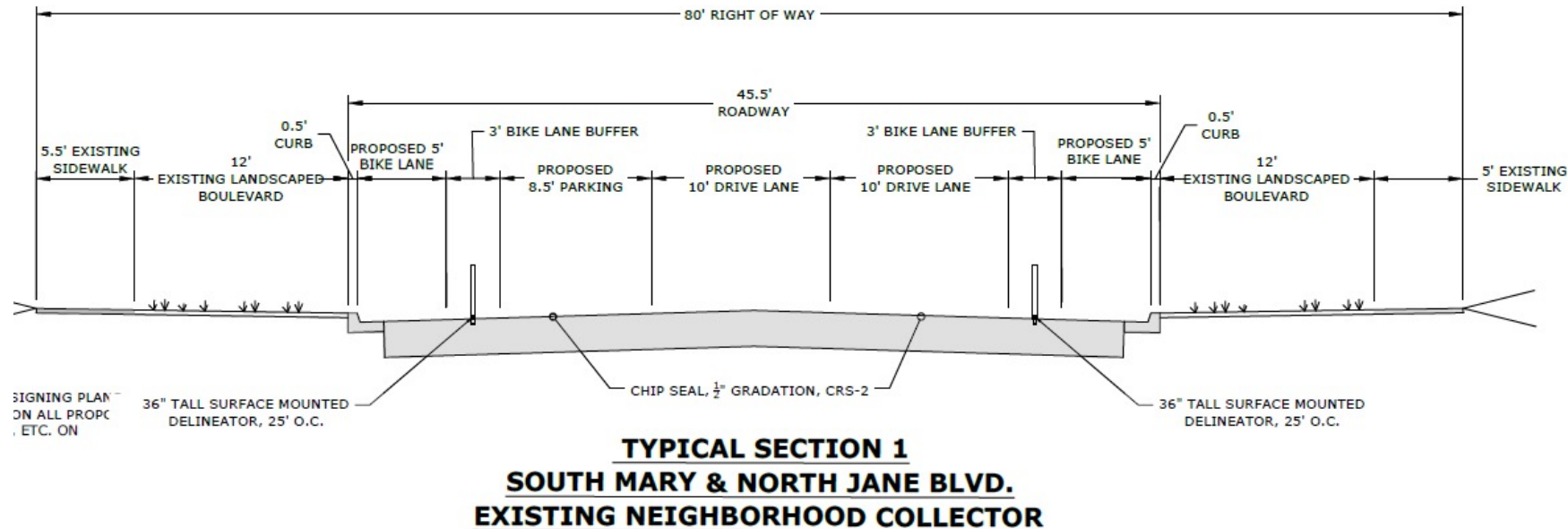


# TYPICAL SECTIONS – GEORGE ELMER



# MARY JANE – EXISTING RECONFIGURATION

- Parking on the east side of Mary Jane Boulevard from Melrose Place to Camden Street will be eliminated.
- This aligns with public feedback collected during the Mullan Area Master Plan and allows for the addition of protected bike lanes.
- The addition of bike lanes will allow for increased bike path connectivity and a safer commute for all users.

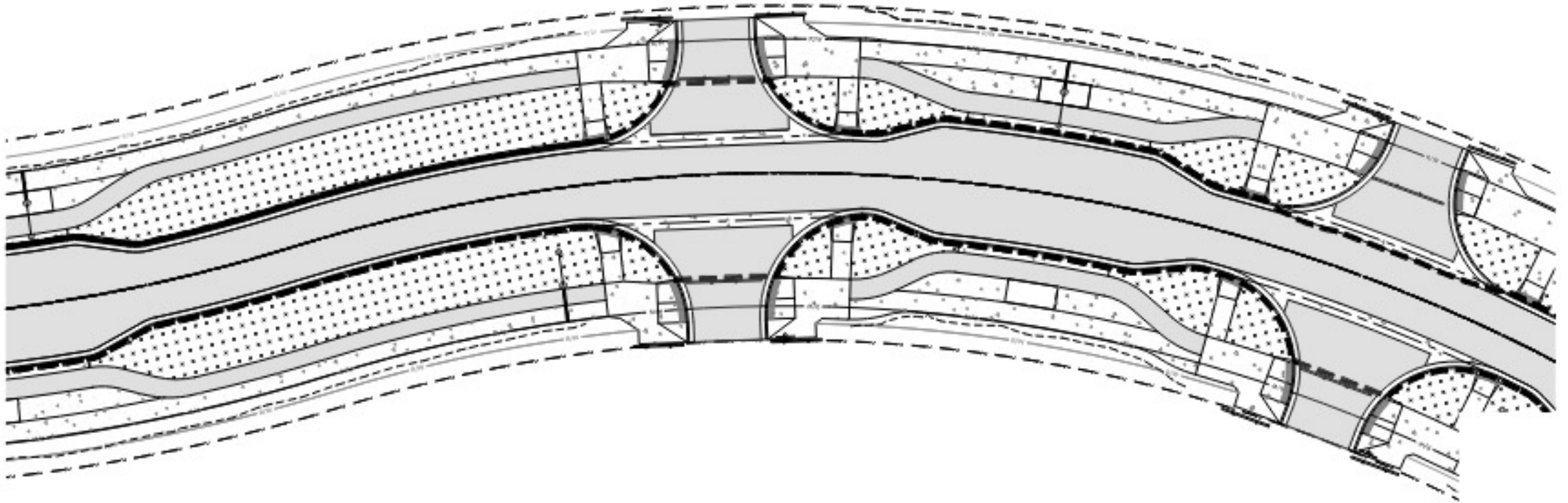




# MARY JANE NORTH – PLAN VIEW

---

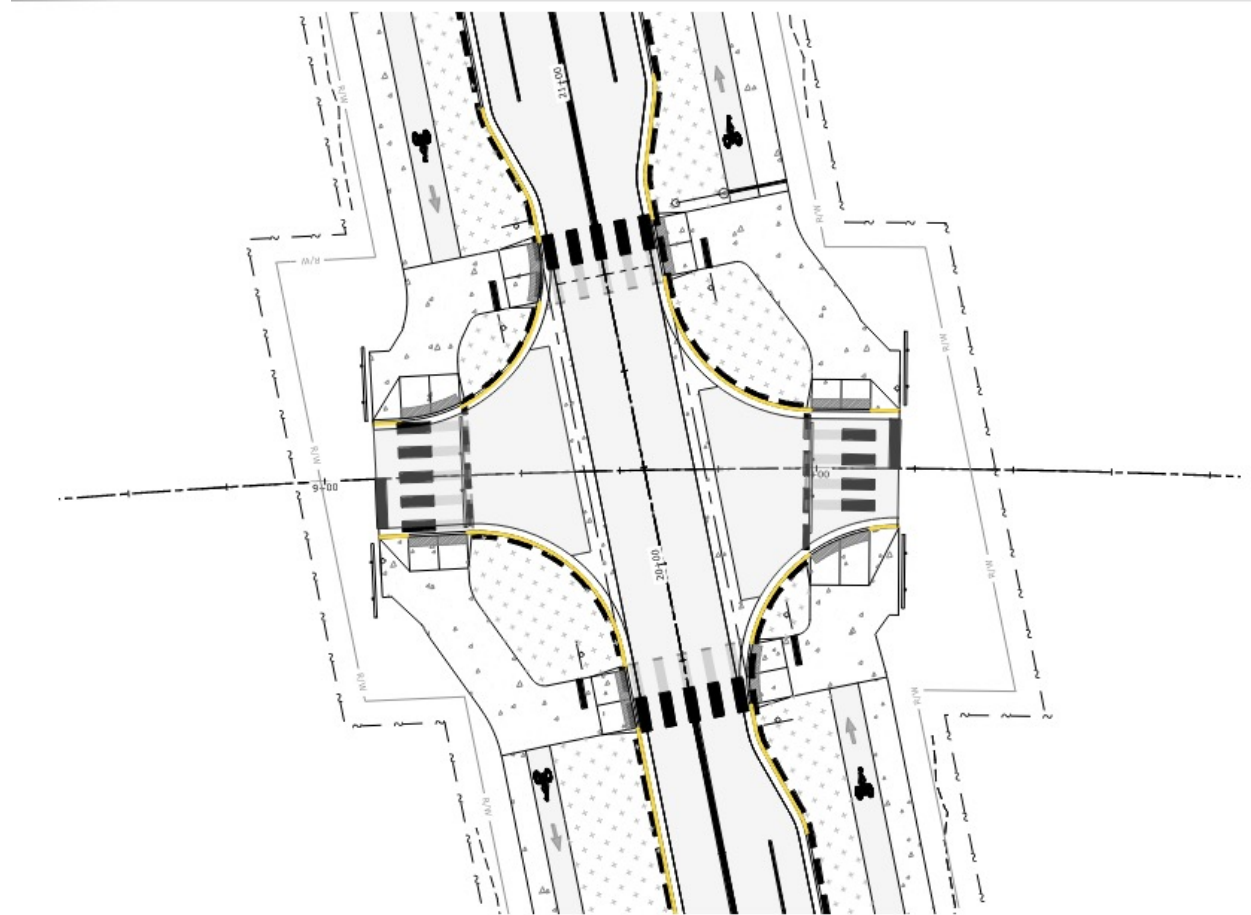
[STA 63+00 -67+20]



# BULB-OUT INTERSECTIONS

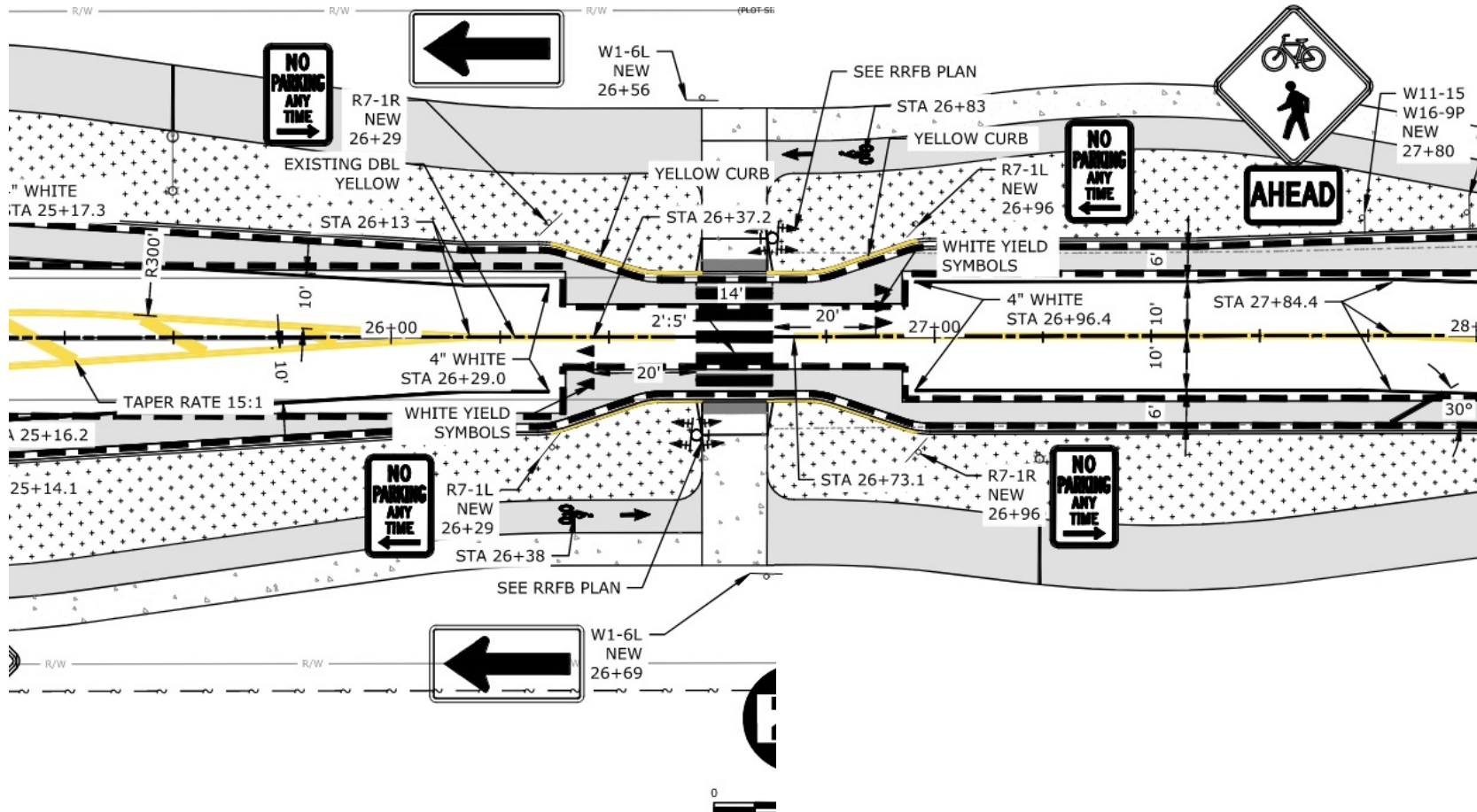
## MARY JANE/O'LEARY

---



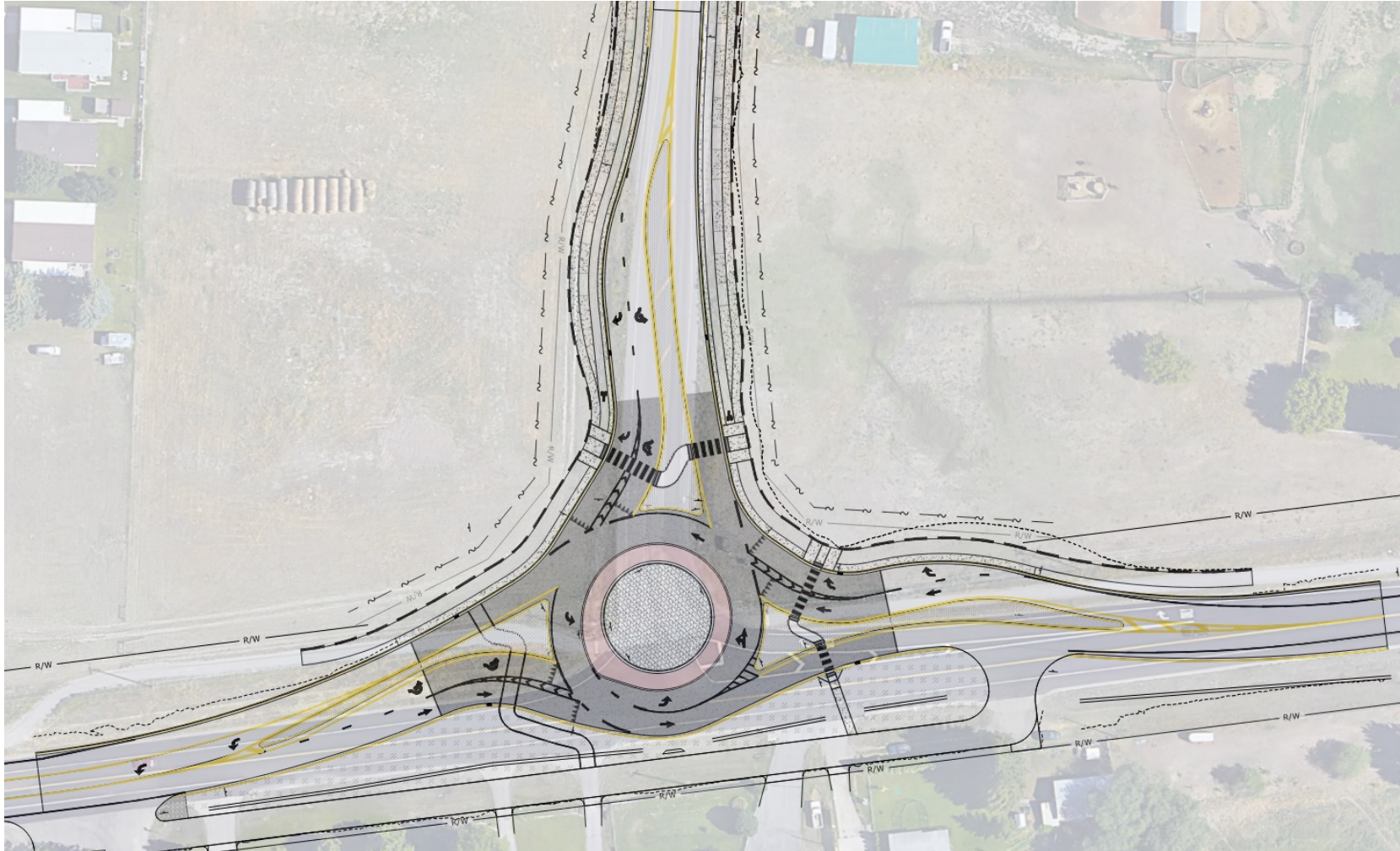


# MID BLOCK CROSSING - TIPPERARY WAY TRAIL



# ROUNDBABOUTS – GEORGE ELMER + MULLAN

---





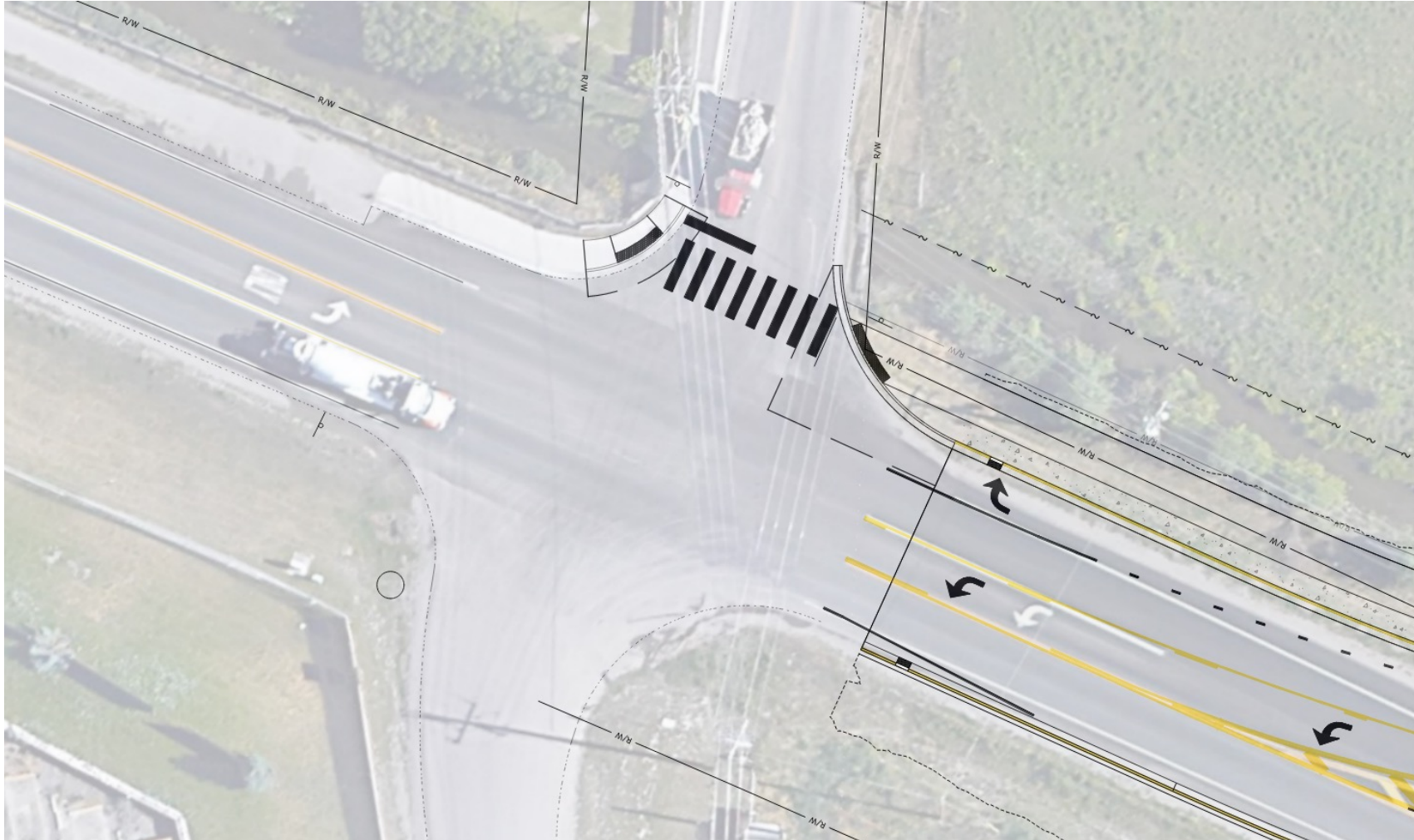
# ROUNDBABOUTS – MARY JANE + MULLAN

---



# FLYNN + MULLAN INTERSECTION

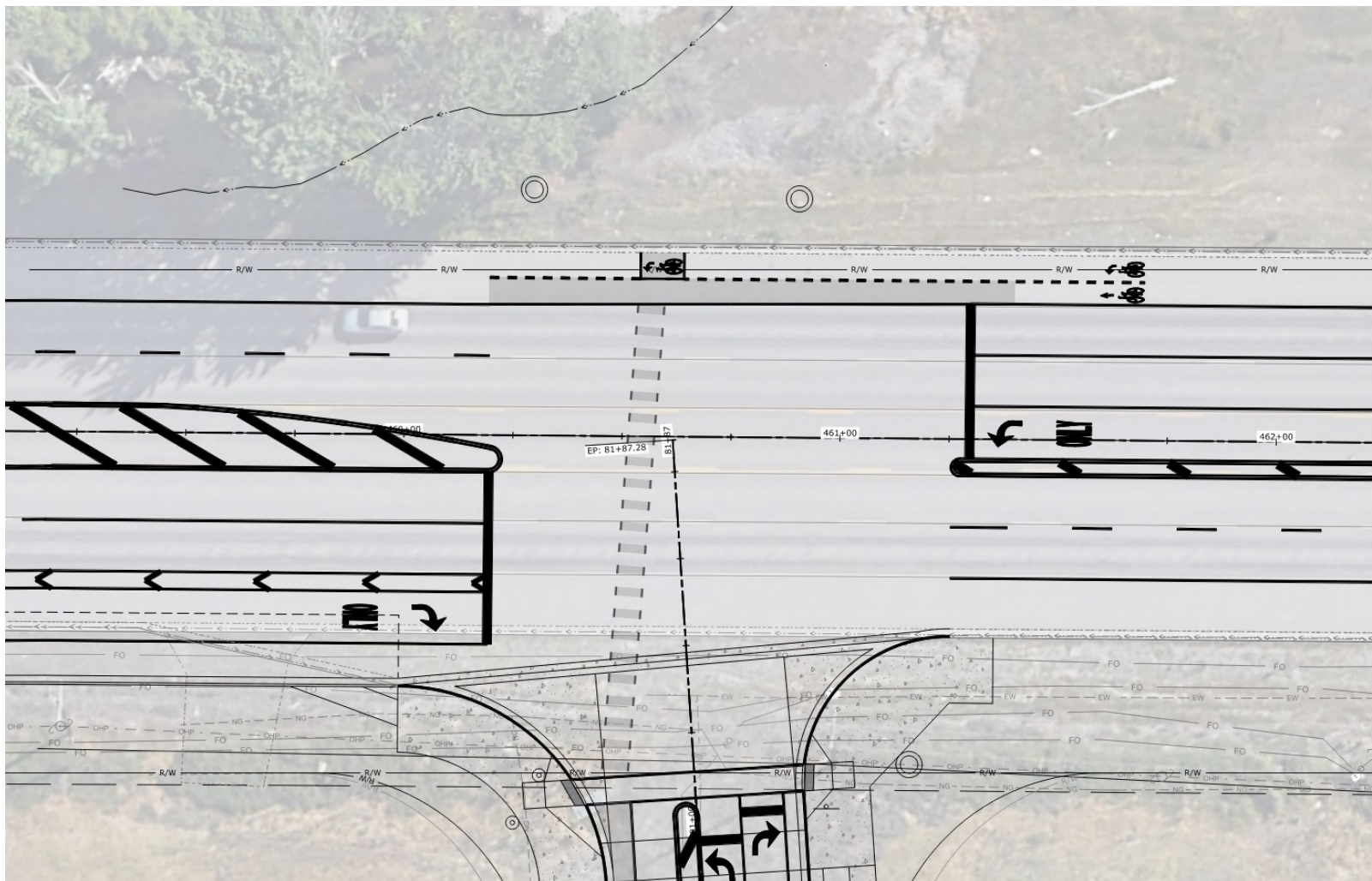
---





# SIGNAL – MARY + BROADWAY (MDT PROJECT)

---





- [illegible]





# QUESTIONS?



**EMAIL** [BECCA@BIGSKYPUBLICRELATIONS.COM](mailto:BECCA@BIGSKYPUBLICRELATIONS.COM)



**VISIT OUR WEBPAGE** [MULLANBUILD.COM](http://MULLANBUILD.COM)